

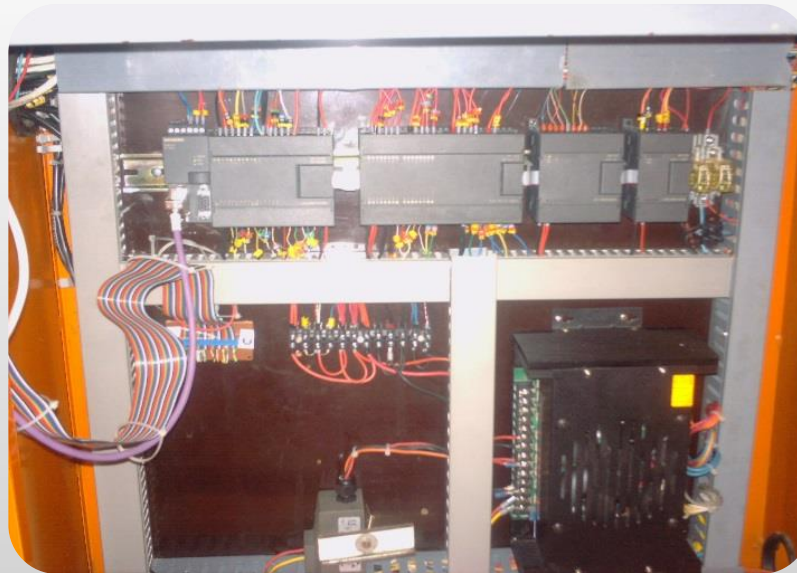
# Plastic Injection Machine Retrofit

Full Electrical Renovation of Plastic Injection Machine to include Hardware and Electrical Design, Software PLC and HMI Development New Cabinet and installation and Wiring.

## Testing And Commissioning

### REQUIREMENTS of the customer:

- Replace Existing old system that was causing too many problems on the electrical and hydraulic level stopping the production and affection the business.
- Install a suitable and reliable controller that can perform the needed requirements and put back the machine into accurate production with negligible downtimes.
- Find the needed datasheets for the old hydraulic controllers, such as the pump and the valves controllers MOOG for instance and many others thirs part devices that can be found within the old system design.



Company:

Location:

Country: Lebanon

Solution  
Partner

**SIEMENS**

Automation  
Drives

**Contact:**

Point center (Afrak  
Plaza), BLVD Fouad  
Chehab, Sin El Fil  
55021 Beirut Lebanon

**Phone:** +961 1 491161

**Fax:** +961 1 491162

# Plastic Injection Machine Retrofit

Full Electrical Renovation of Plastic Injection Machine to include Hardware and Electrical Design, Software PLC and HMI Development New Cabinet and installation and Wiring.

## Testing And Commissioning

Company:

Location:

Country: Lebanon

### BENEFIT of the customer:

- Latest technology installed that can ensure high availability of products and spare parts, flexibility in replacement and enhancement of upgrades when needed.
- Production Costs are automatically reduced due to the cycle times improvements, reduction of number of operators needed to run the machine, negligible shutdown times, no mechanical or electrical failures.
- No more headache on the mechanical problems level that are sometimes caused by the malfunction of the electrical system



Solution  
Partner

**SIEMENS**

Automation  
Drives

#### Contact:

Point center (Afrah  
Plaza), BLVD Fouad  
Chehab, Sin El Fil  
55021 Beirut Lebanon

Phone: +961 1 491161

Fax: +961 1 491162

# Plastic Injection Machine Retrofit

Full Electrical Renovation of Plastic Injection Machine to include Hardware and Electrical Design, Software PLC and HMI Development New Cabinet and installation and Wiring.

## Testing And Commissioning

Company:

Location:

Country: Lebanon

### Implementation:

- *Solution Partner always implements the suitable design and technology using the lowest budget making sure that the hardware used is perfectly able.*
- *Siemens Products with the S7-Family has proven a high efficiency in operation based on rugged design of electronics for dusty and harsh environment, therefore using S-200 or 1200 fits perfectly for this kind of applications*



Solution  
Partner

**SIEMENS**

Automation  
Drives

#### Contact:

Point center (Afrah Plaza), BLVD Fouad Chehab, Sin El Fil 55021 Beirut Lebanon

Phone: +961 1 491161

Fax: +961 1 491162