

Supply and installation of Rockwell Controllogix PLC system replacing old PLC2 system.

Company: SIDEM

Location: Zouk

Country: Lebanon

REQUIREMENTS of the customer:

- Reprogramming the machine code using old PLC2 most of PLC code, and adding some additional features.
- Deliver 4 remote IO rack including PLC rack, reprogramming and startup.
- Short installation and startup period.

BENEFIT of the customer:

- Delivery of complete system within few weeks , conserving machine functionality even if complete automation system was replaced , more events and alarms were displayed using Panel View HMI.
- New hardware used, available in the market comparing to PLC2 obsolete hardware.
- It is possible to reduce operational costs by identifying the errors and fault functions whenever occurring.
- It is possible to reduce maintenance costs by installation a maintenance computer stating of studio 5000 service edition, so all interlocks could be detected whenever faults occurs.

SIDEM
SOCIETE POUR L'INDUSTRIE DES METAUX S.A.L.

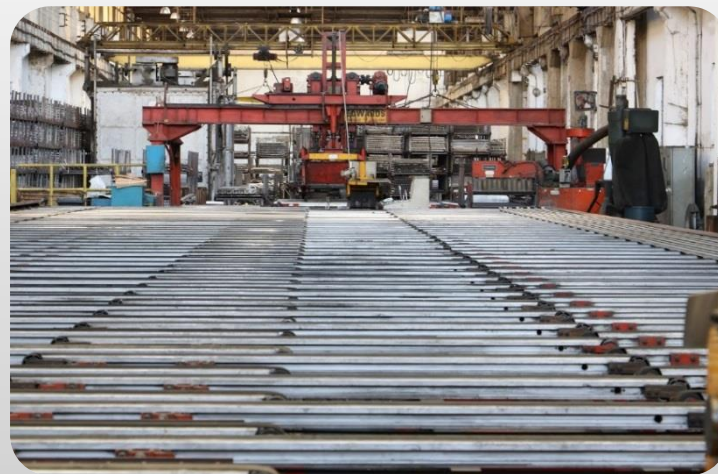
Rockwell
Automation

Contact:

Point center (Afrah Plaza), BLVD Fouad Chehab, Sin El Fil 55021 Beirut Lebanon

Phone: +961 1 491161

Fax: +961 1 491162



Supply and installation of Rockwell Contrologix PLC system replacing old PLC2 system.

Company: SIDEM

Location: Zouk

Country: Lebanon

Implementation:

- Using the PLC capabilities that enhance software cycle time ,new functions comparing to old PLC2 8 bits instructions.
- Know how, experience, support.
- Studio 5000 V30, Factory talk view ME.
- Fast delivery time, startup in few days, machine operations were exactly the same comparing to old method of operation which is an advantage for the Operators.
- sing the PLC capabilities that enhance software.



SIDEM
SOCIETE POUR L'INDUSTRIE DES METAUX S.A.L

Rockwell
Automation

Contact:

Point center (Afrah Plaza), BLVD Fouad Chehab, Sin El Fil 55021 Beirut Lebanon

Phone: +961 1 491161

Fax: +961 1 491162

Supply and installation of Rockwell Controllogix PLC system replacing old PLC2 system.

Company: SIDEM

Location: Zouk

Country: Lebanon

SIDEM
SOCIÉTÉ POUR L'INDUSTRIE DES MÉTAUX S.A.L.

Rockwell
Automation

Contact:
Point center (Afrah Plaza), BLVD Fouad Chehab, Sin El Fil
55021 Beirut Lebanon

Phone: +961 1 491161

Fax: +961 1 491162

